

PUBLISHER CORRECTION

Open Access



Publisher Correction: Flexible nonlinear modeling reveals age-related differences in resting-state functional brain connectivity in autistic males from childhood to mid-adulthood

Daniel Feldman^{1,2*} , Molly Prigge^{2,3}, Andrew Alexander^{3,4,5}, Brandon Zielinski^{2,6}, Janet Lainhart^{3,4} and Jace King^{1,2*}

Correction: *Molecular Autism* (2025) 16:24
<https://doi.org/10.1186/s13229-025-00657-1>

In this article, Fig. 2 appeared as a duplicate of Fig. 3, due to a typesetting mistake. The incorrect and correct version of Fig. 2 are displayed below and the original article has been corrected. The publisher apologizes to the authors and readers for the inconvenience caused by this error.

The original article can be found online at <https://doi.org/10.1186/s13229-025-00657-1>.

*Correspondence:

Daniel Feldman
daniel.a.feldman@utah.edu

Jace King
jace.king@hsc.utah.edu

¹Department of Biomedical Engineering, University of Utah, Salt Lake City, UT 84112, USA

²Department of Radiology & Imaging Sciences, University of Utah, Salt Lake City, UT 84112, USA

³Waisman Center, University of Wisconsin-Madison, Madison, WI 53706, USA

⁴Department of Psychiatry, University of Wisconsin-Madison, Madison, WI 53706, USA

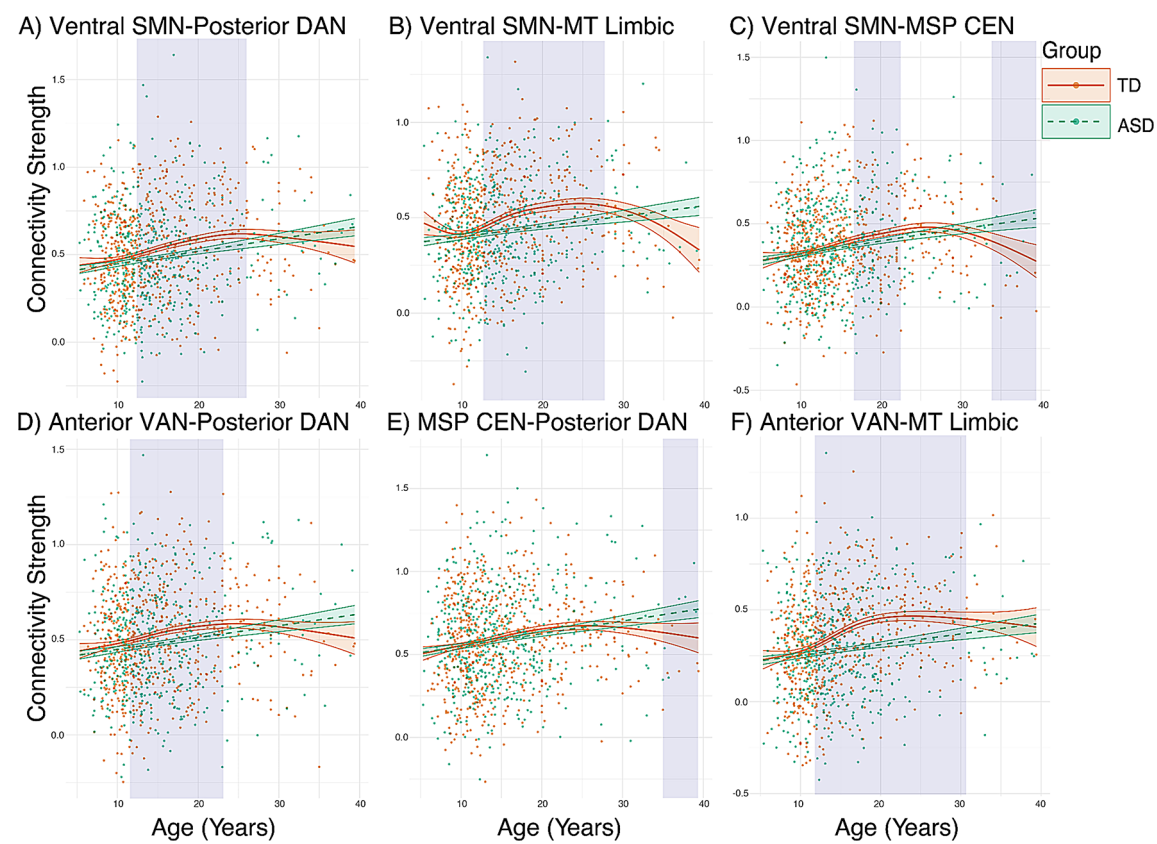
⁵Department of Medical Physics, University of Wisconsin-Madison, Madison, WI 53706, USA

⁶Department of Pediatrics, Neurology, and Neuroscience, University of Florida, Gainesville, FL 32611, USA



© The Author(s) 2025. **Open Access** This article is licensed under a Creative Commons Attribution-NonCommercial-NoDerivatives 4.0 International License, which permits any non-commercial use, sharing, distribution and reproduction in any medium or format, as long as you give appropriate credit to the original author(s) and the source, provide a link to the Creative Commons licence, and indicate if you modified the licensed material. You do not have permission under this licence to share adapted material derived from this article or parts of it. The images or other third party material in this article are included in the article's Creative Commons licence, unless indicated otherwise in a credit line to the material. If material is not included in the article's Creative Commons licence and your intended use is not permitted by statutory regulation or exceeds the permitted use, you will need to obtain permission directly from the copyright holder. To view a copy of this licence, visit <http://creativecommons.org/licenses/by-nc-nd/4.0/>.

Incorrect version of Fig. 2



Correct version of Fig. 2:

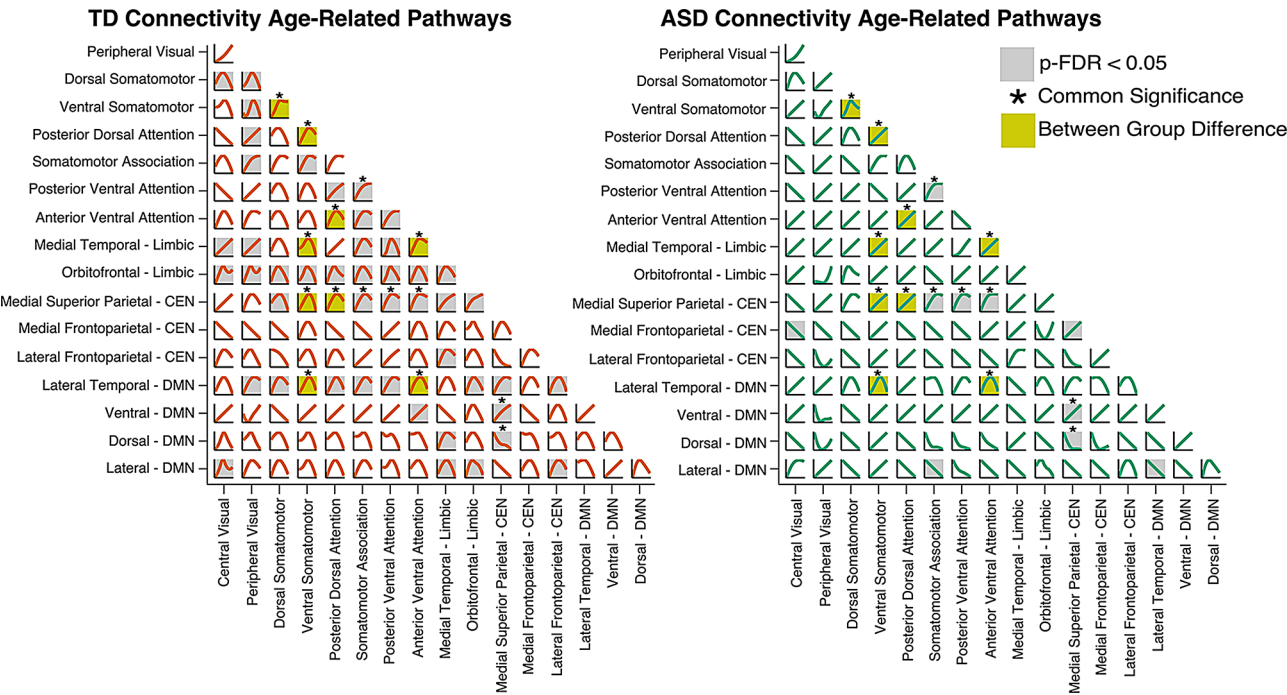


Fig. 2 Trajectories of functional brain development. Each individual curve displays connectivity strength (y-axis) with increasing age (x-axis, range 5–40). Connections that varied significantly with age after multiple comparison corrections are shaded in gray. *Common significant connections shared by both ASD and TD. Significant between group differences highlighted in gold

Published online: 02 May 2025

Publisher’s note

Springer Nature remains neutral with regard to jurisdictional claims in published maps and institutional affiliations.